

# The Lyme Epidemic & Its Non-pharmaceutical Treatment

A Webinar presented on 25<sup>th</sup> of May 2017 by:

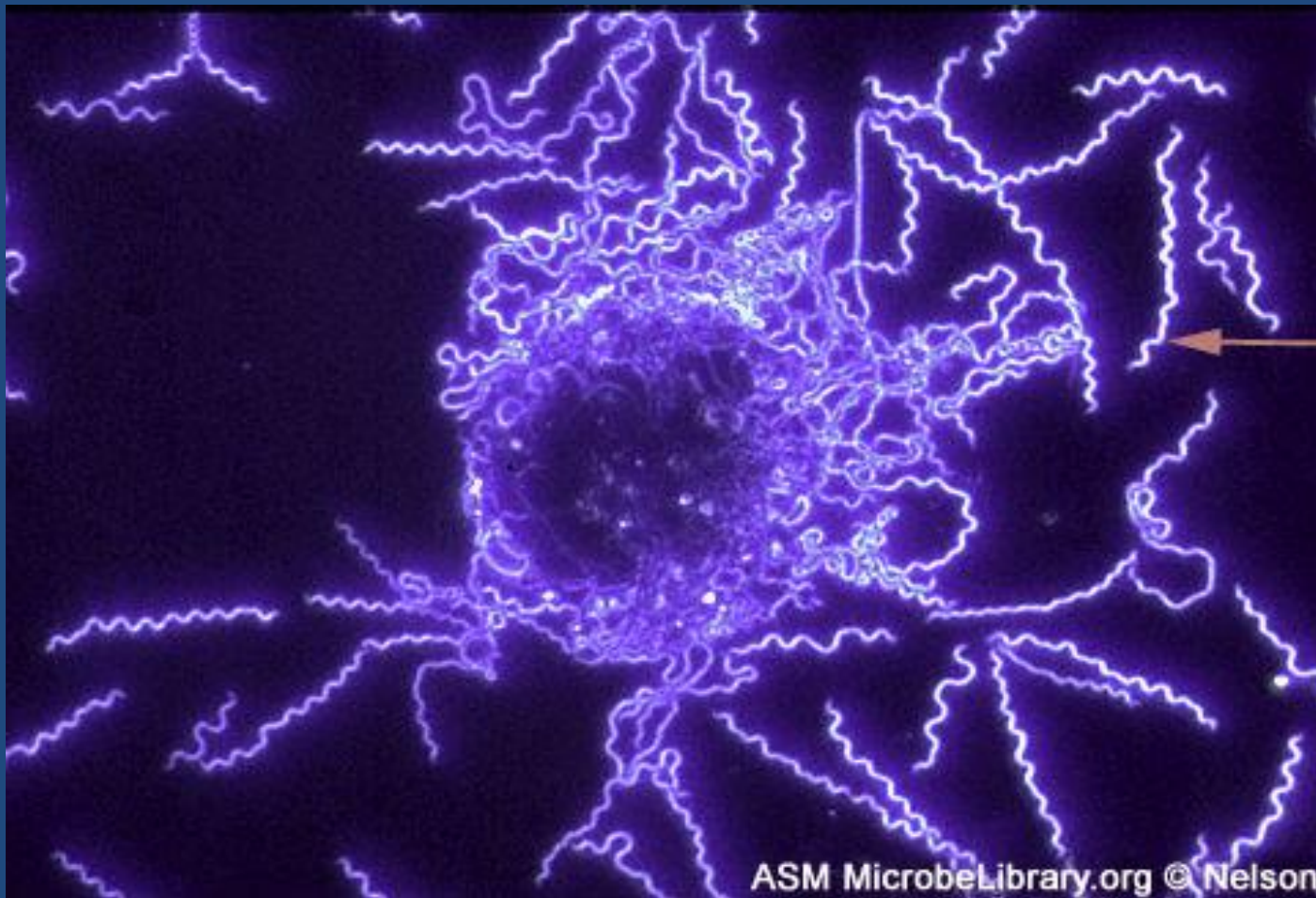
W. Lee Cowden, MD, MD(H)

USA Board-Certified Internal Med & Cardiology

Chairman Scientific Advisory Board of

Academy of Comprehensive Integrative Medicine

[www.acimconnect.com](http://www.acimconnect.com)



Spirochete bacteria,  
*Borrelia burgdorferi*

**Primary Cause  
of Lyme Disease**

ASM MicrobeLibrary.org © Nelson

Morphology of *Borrelia burgdorferi*. Dark field image © Jeffrey Nelson, Rush University, Chicago, Illinois and **The MicrobeLibrary**

**CDC says >300,000 new cases *B.burgdorferi* /yr in USA  
and is increasing worldwide (= Epidemic)**

Copyright W.L.Cowden 2017

# Erythema Migrans (bull's eye) rash in Borreliosis

But at least  
30% of Lyme  
pts. don't get  
this rash.



# “Lyme” can include any or all of these “bugs”:

## Common co-infections (acquired at the same time)

**Borrelia** (36+ species & at least 4 species known to cause disease)

**Bartonella** (cat scratch disease & 31 other species of bacteria)

**Babesia** (14+ species of protozoa) and **Theileria microti**

**Protomyxzoa** (Stephen Fry Lab: at least 8 species of protozoa)

**Leptospira** (other spirochetal bacteria); **Mycoplasma** (hundreds of L-forms)

**Ehrlichia, Coxiella & Anaplasma** (and other rickettsia)

**Yersinia** (common in Europe), **Chlamydia, Brucella & Tularemia**

**Powassan virus** (HA, fever, fatigue, joint&muscle pains & later N/V, weakness)

## Opportunistic infections/infestations (or co-conspirators)

**Protozoa & worms** (such as *V. Klapowi* lungworm & *Sapi* microfilaria)

**Fungi** (candida, aspergillus, penicillium, cladysporium, stachybotris, etc.)

**Treponema sp. & Ochrabactrum anthropi** (oral bacteria)

**Viruses** (HSV-1 & 2, CMV, Echovirus, HHV-6 & 7, XMRV, coxsackie, etc.)

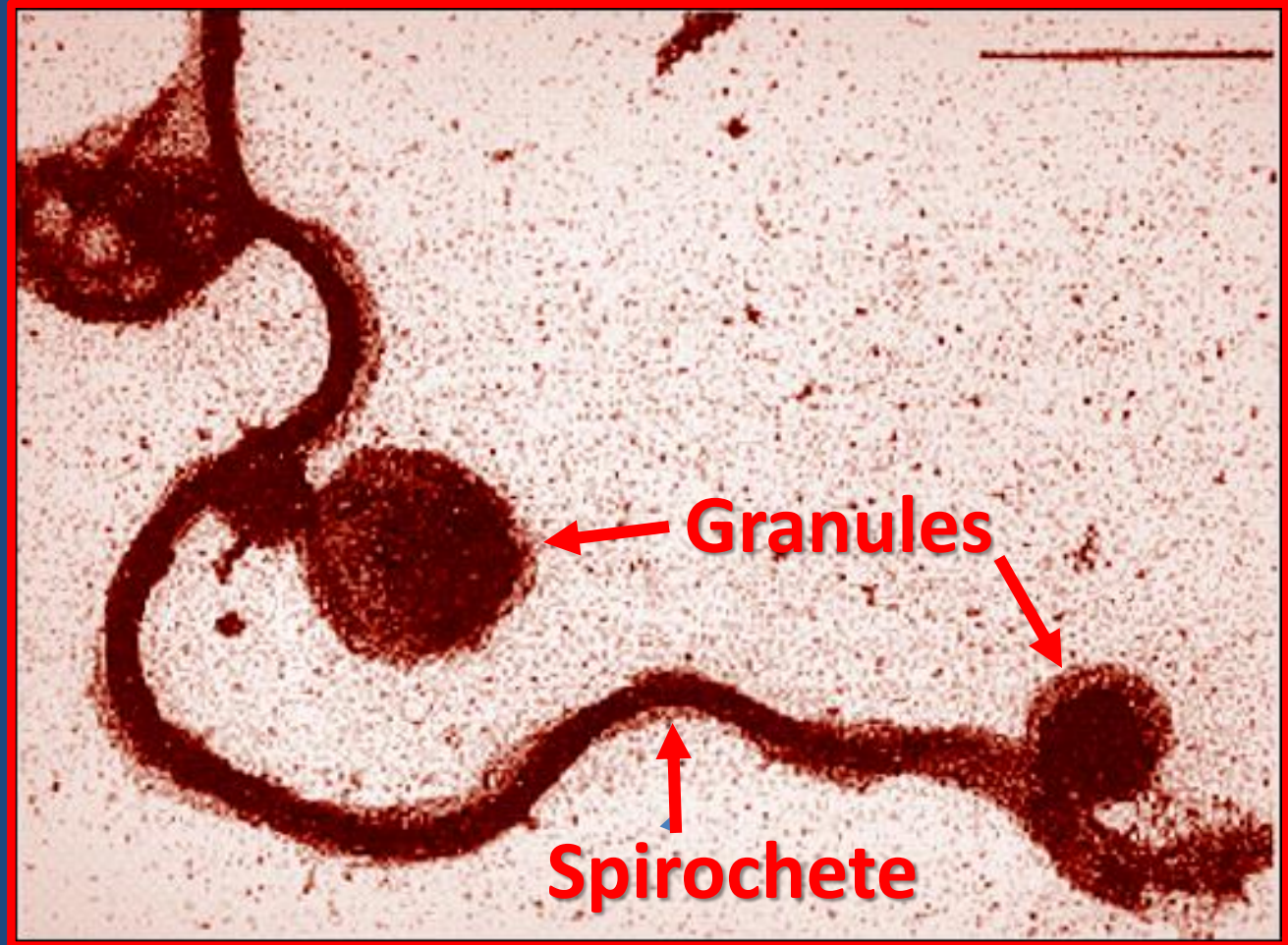


# Survival Strategy of Pleomorphologic Variation in *Borrelia burgdorferi* & Other Spirochetes

When exposed to antibiotics, *Borrelia burgdorferi* develops granules & cysts (round bodies) which are resistant to antibiotics.

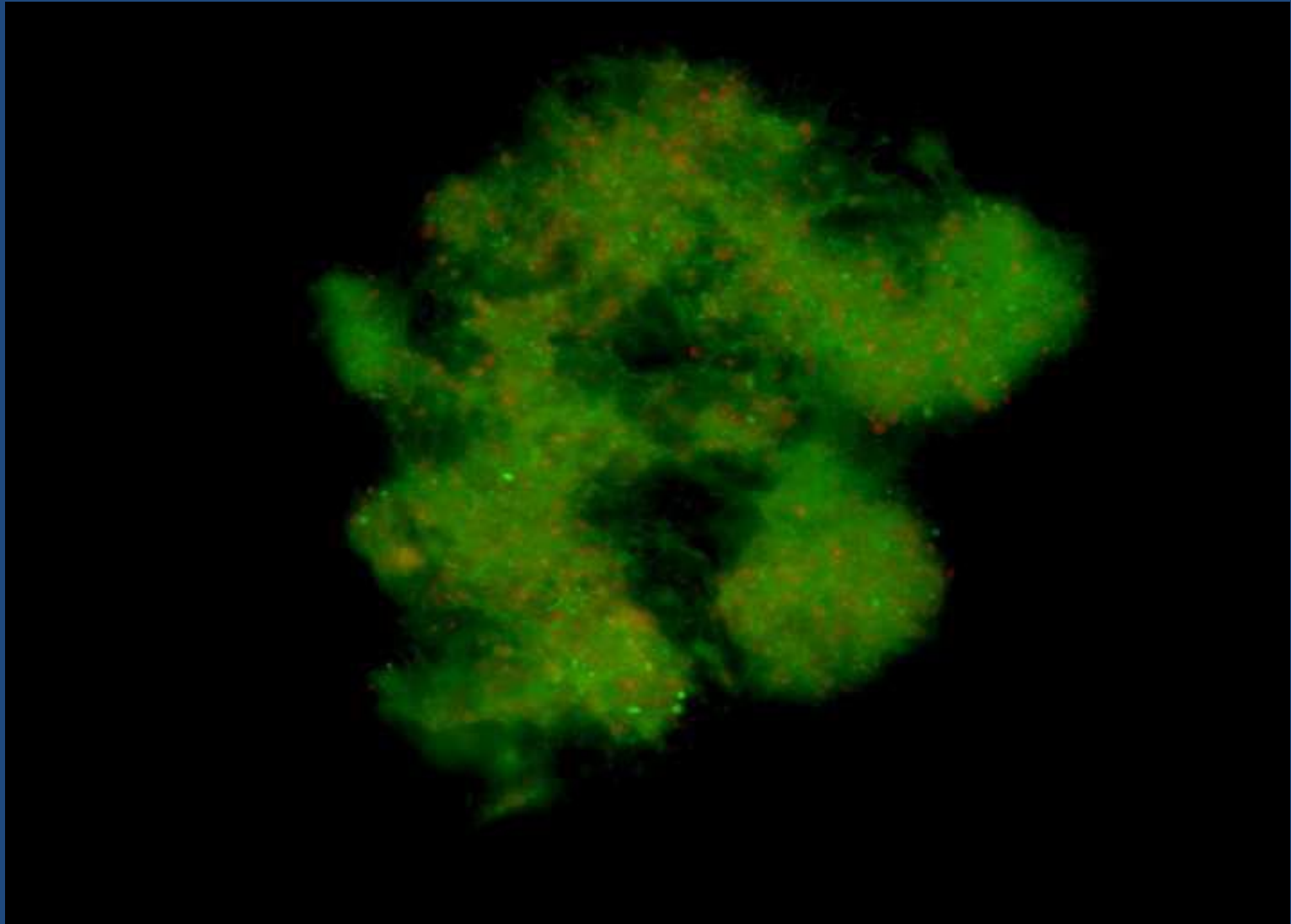
*Antimicrobial Agents & Chemotherapy*, 1995;39(5):1127  
*Infection*, 1996, 24(3):218.

**This is why cyclic therapy is needed**



Kersten A, Poitschek C, Rauch S, Aberer E. 1995

# Borrelia Biofilm



# BORRELIA & CO-INFECTIONS: TRANSMISSION



Tick + ?Lice/Flea/Fly/Mosquito

?Blood Transfusions

?Sexual Intercourse

?Trans-Placental to Fetus

?Breast Feeding

?Unpasteurized Milk

W. Harvey & P. Salvato,  
Med Hypothesis 2003, 60:724-59  
(224 peer-reviewed references)

# Emerging Infectious Determinants of Chronic Diseases

CDC-Emerging Infectious Diseases Vol. 12, No. 7, July 2006 • [www.cdc.gov/eid](http://www.cdc.gov/eid)

- “Evidence now confirms that noncommunicable chronic diseases can stem from infectious agents. Furthermore, at least **13 of 39 recently described infectious agents induce chronic syndromes.** Identifying the relationships can affect health across populations, creating opportunities to reduce the impact of chronic disease by preventing or treating infection... infectious agents likely determine more cancers, immune-mediated syndromes, neurodevelopmental disorders, and other chronic conditions than currently appreciated.”



# Microbes in Various Chronic Diseases

Garth Nicolson, Judith Miklossy, Lida Mattman, Hal Huggins, Jim Roberts, & others

- Multiple Sclerosis: 90+% Chlamydophila/ Mycoplasma/ Borrelia (38/41 CSF cultures + Borrelia- Lida Mattman)
- ALS: Ochrabactrum anthropi, spirochetes, viruses
- Autism: 16X more likely to have Borrelia, fungi, viruses, mycoplasma...
- Chronic Fatigue Syndrome: 18X more likely to have Mycoplasma, HHV-6, CMV, Borrelia (90% Borrelia +)
- Atherosclerosis/MI/stroke: increased when increased total microbial load (esp. dental, mycoplasma & Borrelia)
- Premature labor: linear relationship between total load of microbes in amniotic fluid (>18species)
- Alzheimers: 80% chlamydophila, 65% Treponema, 25% Borrelia (Miklossy), Herpes Simplex Virus...

# **BORRELIOSIS: 2<sup>nd</sup> GREAT IMITATOR**

Borreliosis causes, mimics or contributes to more than **300 diseases**  
([www.nutramedix.ec](http://www.nutramedix.ec) in the Science Library)

Borrelia can mimic MS, myelopathy, polyneuropathy, brain tumor, encephalopathy ([Neurosurgery.1992 May;30\(5\):769-73](#))

Can cause meningitis, encephalitis, neuritis, mania, OCD, depression, schizophrenia, anorexia, dementia([Am J Psychiatry.1994;151\(11\):1571-83](#))

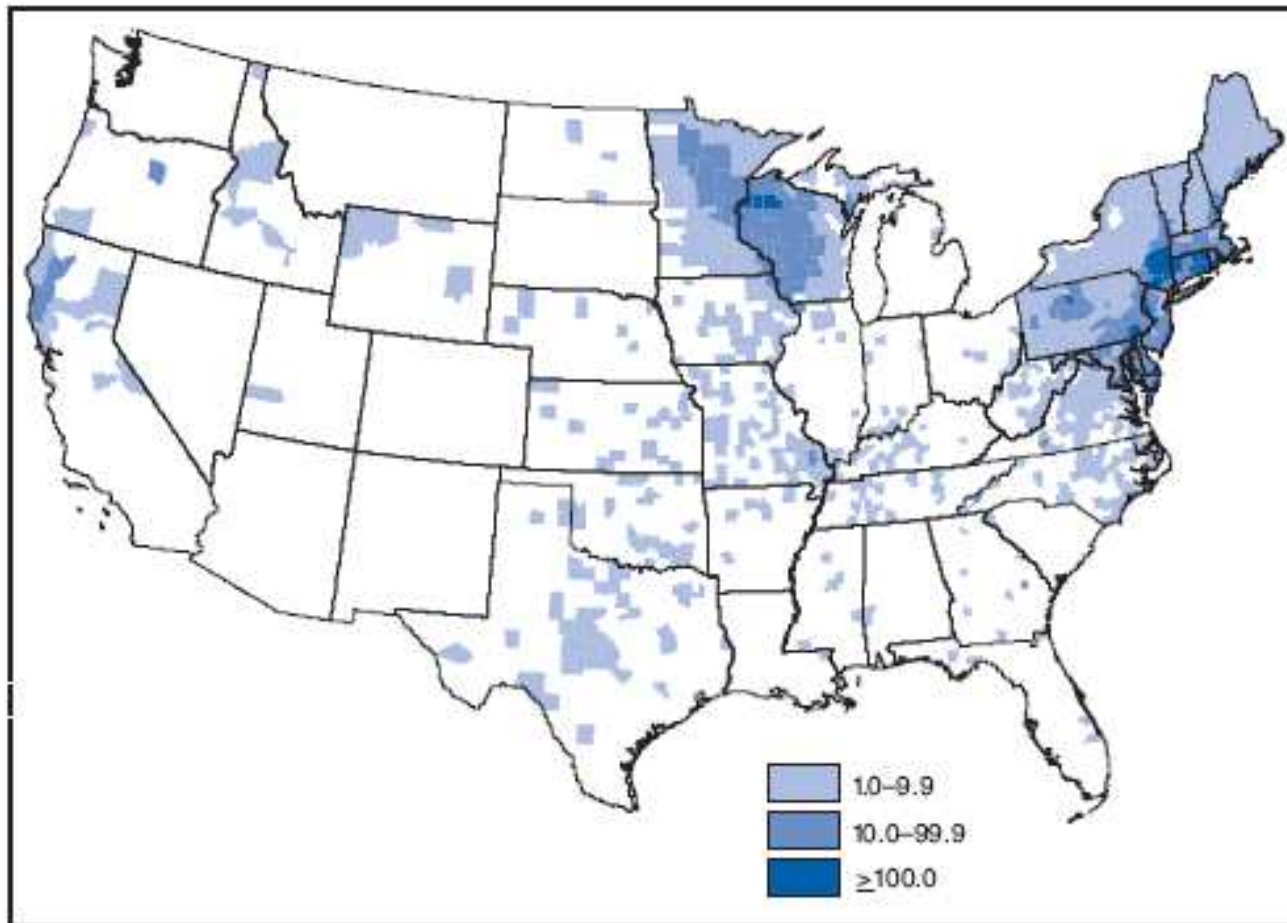
Can cause cardiomyopathy, CHF, perimyocarditis, arrhythmias, AV block, conduction disturbances ([Eur Heart J.1991 Aug;12 Suppl D:73-5](#))

Most fibromyalgia patients are Borrelia positive.  
([Rheum Dis Clin North Am. 1998 May;24\(2\):323-51](#))

Fetal borrelia can cause fetal death, sudden infant death, fetal anomalies, growth retardation, cardiac anomalies, hydrocephalus, blindness, neonatal resp.distress, and toxemic pregnancy.  
([Rheum Dis Clin North Am.1989 Nov;15\(4\):657-77](#))

**\*Borrelia is overlooked because it resembles so many other diseases !**

**FIGURE 2. Average rate\* of Lyme disease, by county of residence† — United States, 1992–2006§**



\* Per 100,000 population.

† County of residence was available for 98.1% of cases reported during 1992–2006.

§ During 2003, Pennsylvania reported 4,722 confirmed cases and 1,008 suspected cases.

# Myth: Lyme is a Northeastern Disease

## Dog vs. Human Cases: 2000-2006



\*Reporting from IDEXX Laboratories: Lyme positives from more than 10,000 veterinary clinics, telephone surveys and IDEXX Reference Laboratories' results collected from the year 2000-2007. <http://www.dogsandticks.com/US-map-lyme-disease-dogs/index.html>



# Other Lyme Testing & Treatment Issues

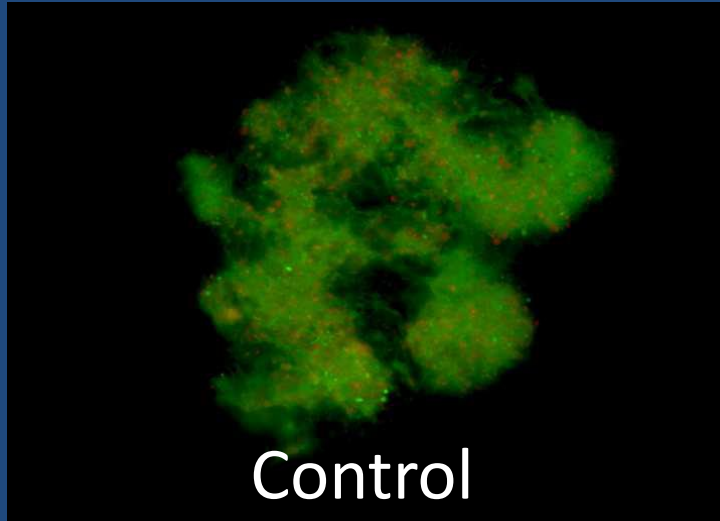
Cameron D, 2007 J. Evaluation in Clinical Practice, 13(3):470-472

- **CDC now acknowledges >300,000 new cases/year but only about 10% are being diagnosed & reported**
- **Prior treatment with antibiotics can attenuate antibody response to Borrelia**  
(More likely to test negative, possibly forever)
- **There is no “test for cure” of Lyme**
- **Treatment delay worsens outcome**
  - **If >60days from onset to treatment, 6x more likely to remain ill chronically**
  - **If EM rash+, then 5x more likely cured with treatment**

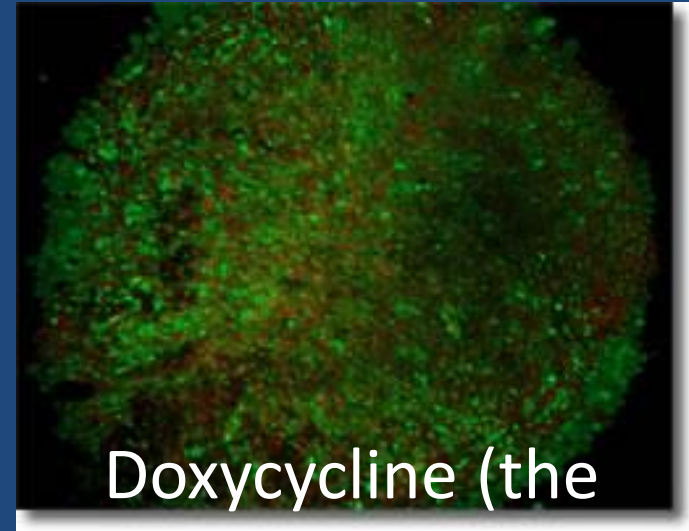
# Antibiotics Don't Work For Chronic Lyme

- Survival of *Borrelia burgdorferi* in patients with Lyme borreliosis treated with antibiotics. Preac-Mursic V, et al. Infection 1989;17(6):355–359
- Culture positive and PCR positive blood after antibiotics therapy in 13/165 patients. Oksi J, et al. Ann Med.1999 Jun;31(3):225-32.
- Treatment with oxytetracycline, erythromycin or **doxycycline** in mice failed to eradicate acute *Borrelia* infection. Moody KD, et al. 1994
- Chloramphenicol and azithromycin also failed to eradicate *Borrelia*. Moody KD, et al. Antimicrob Agents Chemother 1994;38(7):1567-72
- Persistence of *Borrelia burgdorferi* following antibiotic (ceftriaxone) in mice. Hodzic E, et al. Antimicrob Agents Chemother 2008;52:1728-36
- In Vitro Study of Susceptibility of Mobile & Cystic Forms of *Borrelia burgdorferi* to Metronidazole. Brorson O, et al. APMIS 1999 ;107(6):566-76
- Clinically treatment failures occur in 11% of 118 Erythema Migrans patients when treated with oral **doxycycline** or amoxicillin for 14 to 30 days. Smith RP, et al. Ann Intern Med. 2002;136(6):421–8

# Effect of Therapies on Borrelia Biofilm



Control



Doxycycline (the  
“standard of care”)



Banderol Only



Samento Only



Banderol+Samento

# More Borrelia Research- U. New Haven

Eva Sapi, PhD presented this at national Lyme conf. 2013 & 2015

- In vitro eval. of Banderol, Samento, Cumanda, Stevia, Jalapa, Enula, Mora, Takuna, Houttuynia & Doxycycline vs 3 forms of B. burgdorferi (spirochete, cyst & biofilm)
- Against **Bb spirochete**, Doxy & all of the tested herbs were effective in vitro
- Against **Bb cyst**, several of the herbs were effective (esp. Jalapa & Stevia) but Doxy was not effective
- Against **Bb biofilm**, all of the herbs were effective (esp. Jalapa & Stevia) but Doxy was not effective



# Misconceptions about Lyme Disease (Borreliosis plus Co-infections)

- Lyme disease is only a concern in Northeastern US states
- All patients recall a tick bite or bulls eye rash (>30% don't)
- ELISA is a sensitive screening test (misses Dx >30% of time)
- Only one infectious pathogen is usually transmitted by the tick bite (usually at least two microbe species & often more)
- A short course of antibiotics resolves all cases of Lyme disease (per "Treatment Guidelines" of IDSA)

## Truth

Lyme disease is worldwide, may present as chronic and complex 'medically unexplained symptoms', is difficult to diagnose, is multi-microbial and difficult to treat.

# **Dallas, Texas Pilot Study 2003**

(unpublished)

## **The Question To Be Answered:**

**“Can Natural Medicine make a difference  
in patients with advanced Borreliosis &  
co-infections given no hope by  
conventional medical doctors?”**

# Dallas Texas Pilot Study Population

- 14 pairs of laboratory-confirmed, advanced Lyme Borreliosis patients with various co-infections were randomized into integrative or allopathic Tx groups
- All had neuro-Borreliosis & had failed antibiotics
- Essentially all were 100% disabled
- On 1<sup>st</sup> evaluation, one patient in the integrative group was found to have ovarian cancer by energetic testing & left the study to get surgery
- The control group was treated allopathically
- The integrative group had multimodal therapy

# Multisystem Protocol for Borreliosis & Co-infections in the Integrative Group

- Blood Type Diet
- Enzymes with meals
- Enzymes between meals
- Vitamins & Minerals
- Herbs to detoxify and support all organs
- Homeopathic drainage
- Samento (*Uncaria tomentosa*)
- Some on Stevia “sweetener”
- Laser Detox
- Chi machine/Light beam generator
- Skin Brushing/MLD
- Bath Detox
- Stretching
- Laughter
- Prayer
- Emotion Release



# Herxheimer Reaction

## Or Healing-Crisis Reaction

- Adverse reactions were rare in the Integrative Treatment Group other than Herx
- The die-off of toxin-producing micro-organisms releases toxins into the body and as one takes treatment to get better, they feel temporarily worse (described first by the German physician Karl Herxheimer)
- **Herx reactions resolved rapidly in the study using drainage remedies**

# Blood Dark Field Microscopy Results In Samento Natural Treatment Group

- Before study- every patient had swarming microbes (spirochetes, fungi, babesia, etc.)
- 2 weeks- fewer microbes than before the study
- 4 weeks- very few microbes in serum
- 6 weeks- no microbes in serum until red blood cells crushed, then many microbes seen
- 8 weeks- no microbes until red cells crushed, then very few microbes seen
- 10 weeks- no microbes seen before or after crushing red cells

# Dallas Pilot Study at 10 Weeks

- 28 Western-Blot-Positive Stage-3 Lyme patients started the study in Dec.2002 (Borrelia & 1+Co-inf.)
- 14 “control” patients continued using conventional therapy during study; one improved moderately, 6 improved slightly, 3 worsened & 4 remained the same.
- Of 14 patients in “integrative” treatment group, 13 completed the study (1 dropped out due to tumor surgery) and all 13 improved subjectively and objectively (2 moderately and 11 markedly).
- By 18 weeks, further improvement in the “integrative” group but not in the “control” group.

# Case Study 1- J.M.

35 year old caucasian man on disability with blood type A, bowel inflammation, carbohydrate intolerance, insomnia, joint pains, fatigue and muscle aches

## BEFORE TREATMENT

- Lost from 155 to 98lbs. during course of 3 years
- 100% disabled
- 50 specialists consulted (Including Mayo Clinic)
- 2 Lyme specialists said no treatment would help

## AFTER 18<sup>th</sup> WEEK

- Insomnia completely gone
- Joint pain 50% improved
- Energy- 90% improved
- Family & friends noticed dramatic difference

## AFTER 9<sup>th</sup> MONTH

Built home with own hands  
Became naturopathic doctor

# Case Study 2- C.F.

18 year old caucasian female with blood type O, extreme weakness and fatigue and anaphylactic food reactions.

## BEFORE TREATMENT

- Completely dependent on family; home schooled
- Walked with walker
- Sick 15 years, since age 3
- Having anaphylaxis often
- No social life
- Dr. said she would not go to college or marry or have children

## AFTER 18<sup>th</sup> WEEK

- Taking care of herself
- Walking without walker
- Going on dates
- 50-75% improvement

## AFTER 9<sup>th</sup> MONTH

Went to college by herself  
Was on honor role & worked  
Got her masters & married  
Now working on PhD & has a healthy baby

# Dallas, Texas Pilot Study 2003

(unpublished)

## Conclusion:

“Natural Medicine can make a difference in patients with advanced Borreliosis & co-infections given no hope by conventional medical doctors”



# Cowden Support Program

## Studied By Dr. Horowitz

- Richard Horowitz MD, then vice-president of ILADS, in Dec.2006 started a few hundred **Lyme patients** (who had failed to improve on antibiotic therapy) on the all-natural **Cowden Support Program** (as Nutramedix named it)
- Cowden Support Program had developed from the Lyme Pilot Study in Dallas in 2003
- See program: [www.nutramedix.ec](http://www.nutramedix.ec)
- 70% of his patients improved fairly quickly (<6mo.)
- Dr. Horowitz presented this at ILADS Conf. 2007
- I evaluated some of the “failures” in his office
- Failures were toxic from **mercury, biotoxins & EMR**, were **dehydrated**, had **food allergies** & were **eating excess sugar**
- Cowden Support Program was then modified
- > 80% of subsequent Lyme pts improved

# Empiric Cowden Support Program For Lyme (as it evolved after Dallas Pilot study)

- Gluten/milk/sugar-free diet
- Enzymes with meals
- Enzymes between meals (Serrapeptase...)
- Magnesium Malate
- Trace Minerals, Lugol's, C, D3
- Detox herbs= Burbur+Pinella alt. with Parsley +/- Mapalo
- Stretching
- Cumanda or Houttuynia or Banderol + Samento & Stevia
- Sulfa Detox= Sparga
- L-glutathione (liposomal)
- Light beam generator
- Lymph drainage/ Chi machine
- Bath Detox & Laughter
- Emotional release
- Drink enough water
- Bind metals= Sealantro
- Mora or Enula +/- Quina
- 3mo. Takuna +/- Tangarana

# Lack of Toxicity of Herbal Products in Condensed Cowden Lyme Protocol

- Pharmacology & toxicology studies were done at the University of Guayaquil in Ecuador
- Samento, Banderol, Cumanda, Houttuynia, Enula, Mora, Burbur, Parsley, Pinella, Sparga, Amantilla, Babuna, & Avea were all tested.
- Doses equivalent to hundreds to thousands of times the recommended doses for humans caused no acute or chronic organ damage nor any unexpected adverse-effects.

# Anti-inflammatory Effects of Quantum-Enhanced Herbals

- Pharmacology & toxicology studies were done at the University of Guayaquil in Ecuador
- Drug Feldene reduced inflammation 99.8%
- **Samento** reduced inflammation 84%
- **Cumanda** reduced inflammation 97%
- **Quina** reduced inflammation 99.9%
- **Noni Conc.** reduced inflammation 99.4%
- **Morinda Noni** reduced inflammation 31.3%

# Cowden Support Program (CSP)

- First 3 days take Burbur+Pinella 20 drops 2x/day & 10 drops of Parsley-Detox 2X/day
- Day 4 add 1cap 2x/day Serrapeptase, 2x2caps Mg.malate, 10drops 2X/day Sparga; also add Banderol & Samento-starting 1drop each & building to 30 drops of each 2X/day
- Day 4 add every other night 40 drops Sealantro
- On day 78, cycle Banderol to Cumanda+Mora then Enula+Houttuynia 30drops2X/day for 12.5 days on, 36 hours off
- On day 78, cycle Samento+Stevia 30 drops each 2X/day 12.5 days on, 36 hours off
- Takuna 30 drops 2X/day is given for first 3 months
- 9-mo. program +[2pg.Summary](#) at [www.nutramedix.ec](http://www.nutramedix.ec)

# Nutramedix CSP Detox Products

- Burbur is an imprinted Desmodium molliculum that detoxes liver, gall bladder, kidneys, lymphatics and ground matrix
- Pinella is imprinted Pimpinella anisum that detoxes brain, spinal cord and nerves
- Parsley has same detoxification imprints as Burbur
- Mapalo is imprinted Matapalo bark that detoxes and regenerates brain, spinal cord & nerves (**CSP-optional**)
- Sparga is imprinted asparagus that detoxes sulfa antibiotics, sulfa diuretics & sulfa diabetic drugs
- Sealantro is imprinted extract of chlorella, cilantro & a brown Pacific algae (detoxes radioactive elements & heavy metals & can take daily after amalgams are out)



# Other **Cowden Support Program** Products

- Magnesium malate aids detoxification by reducing constipation & increasing ATP to metabolize toxins; malic acid is also a heavy metal binder
- Serrapeptase digests fibrin if taken 30' before food
- Banderol for Borrelia, many bacteria & fungi, protozoa
- Cumanda for Borrelia, Bartonella, MANY other bact, Babesia, other protozoa, fungi, rickettsia, worms
- Houttuynia for Bartonella & a few other bacteria
- Samento for rickettsia, Borrelia & several other bact.
- Stevia used in place of sugar (will not feed microbes); good against all Lyme bugs, fungi & against biofilm

# More Antimicrobial Products (\*CSP)

- \*Mora- extracts of yarrow flowers, calycophyllum bark & blackberry leaf (for protozoa, Bartonella, Borrelia, fungi, rickettsia & some worms)
- \*Enula- extracts of elecampane root & jalapa root (spectrum like Mora but stronger)
- \*Takuna- antimicrobial (mostly antiviral)
- Chanca Piedra for Babesia & dissolves stones
- Quina- broad-spectrum antimicrobial (esp. Babesia)
- Tangarana- very broad-spectrum antimicrobial
- Barberry- antibacterial but not Borrelia/Bartonella

# Nutramedix Products Used As-Needed

- Amantilla- valerian root extract for stress & sleep
- Babuna- chamomille extract for stress & sleep
- Adrenal Support- adaptogen with Schizandra berry, Astragalus root, Rhodiola root & Panax Ginseng root
- Vitamin C (Tapioca)- WBC peroxysomes, detoxifier & collagen
- Algas- designed to move metals & radioactives out of body
- Avea- imprinted extract of tumeric for blue-mood/sadness
- Condura- applied topically & orally for some pain relief
- Melatonin- aids sleep & quenches brain free-radicals
- Noni- reduces inflammation, reported helpful in cancer
- Ezov- imprinted extract of hyssop that brings subconscious emotions into the dream-state

# Simple Reasons For CSP to Fail

1. Not drinking water correctly (must drink 2 ounces or 60 ml every 10-15 minutes ALL day)
2. Not taking Burbur+Pinella enough for possible Herx (16-20 drops in 2 oz. water every 10-15 min)
3. Not using  $\frac{1}{4}$  tsp of Liposomal Glutathione on skin every 15 min if Burbur+Pinella fails to stop Herx
4. Eating junk foods &/or allergenic foods (eat NO dairy, wheat, corn, soy, peanuts, or sugars such as honey, syrup, agave or excess fruit); \*deficient D3,C,iodine
5. Not being in bed sleeping from 9pm to 5am
6. Taking too small doses if overweight or resistance
7. Too much mold/EMF pollution in home

# Non-Empiric Program For Lyme or

## MSMMI (Kinesiology or EDS-guided)

- Gluten/milk/sugar-free diet
- Avoid all allergenic food
- Serrapeptase/Lumbrokinase
- +/- Enzymes with meals also
- Mag.malate & Lugol's iodine
- Trace mins + vit.(C,D3,5MTHF)
- Cautious use of Zinc,Mn,Mb,B6
- Sealantro +/- Lipophos-EDTA
- Burbur+Pinella/Parsley+Mapalo
- Cumanda/Tangarana/Banderol/HH
- Enula/Mora for Babesia/parasites
- Flora + fiber + Stevia + Takuna
- +/- LDM/Lauricidin for viruses
- Laser Energetic Detox
- Chi-machine/MLD/LBG/LymphStar-Pro/Skin-brush
- Clay scar treatment
- Stress-reduction +sauna
- Cranial suture release
- EMF avoidance, esp.nite
- Adrenal Support + vit.B5
- AmantillaRelax/Melatonin
- Avea/Lizyme- depression
- Ezov/Evox for emotions
- Samento +/-Artemisinin

**>95% improve**

# Since Blood Tests Often Miss Borrelia, Can Use **Cowden Support Program** Empirically For Symptomatic Patients

- If you have an undiagnosed patient (even one with negative blood tests for Borrelia & co-infections), consider giving the low-risk, fairly low-cost, all natural Cowden Support Program to see if the patient's symptoms improve after a brief Herxheimer reaction.
- If so, they had Lyme or some other Multi-Symptom, Multi-Microbial Inflammation (MSMMI).
- This follows the principle of **“first try to do no harm”**



# What To Do If Pt Can't Do the CSP

- Some patients have such severe Herx that they may need to first build up on Rife frequencies
- Some patients with extremely resistant microbes may need a short course of ozone therapy to lower the microbe load before returning to CSP
- Some patients with severe allergies to Nutramedix Microbial Defense herbs may need to use Rife frequencies, ozone or colloidal silver & Restore\* for a time until they can tolerate the CSP again
- All of these pts will need magnesium, metal detox, drainers, proteolytic enzymes & Herx remedies

# Cowden Support Program

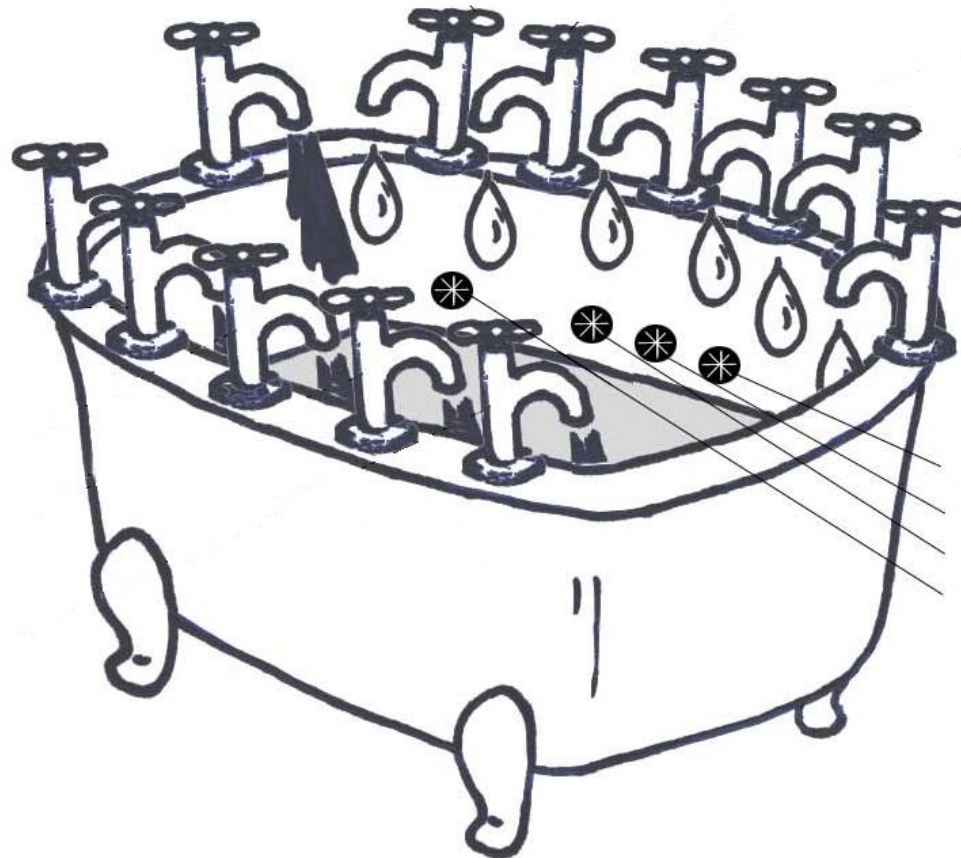
## Studied By Dr. Horowitz

- Richard Horowitz MD, then vice-president of ILADS, in Dec.2006 started a few hundred Lyme patients (who had failed to improve on antibiotic therapy) on the all-natural **Cowden Support Program** (as Nutramedix named it)
- Cowden Support Program had developed from the Lyme Pilot Study in Dallas in 2003
- See program: [www.nutramedix.ec](http://www.nutramedix.ec)
- 70% of his patients improved fairly quickly (<6mo.)
- Dr. Horowitz presented this at ILADS Conf. 2007
- I evaluated some of the “failures” in his office
- Failures were toxic from **mercury, biotoxins & EMR**, were **dehydrated**, had **food allergies** & were **eating excess sugar**
- Cowden Support Program was then modified
- > 80% of subsequent Lyme pts improved

**“Dirty-water” faucets =  
Nutrient depleted foods,  
Electromagnetic fields,  
Radiation pollution,  
Toxic relationships,  
Toxic emotions,  
Heavy metals,  
Polluted air,  
Antibiotics,  
Pesticides,  
Biotoxins,  
Allergens,  
Microbes.**

**Disease is a  
Bathtub full of  
Dirty Water =  
Hi Total Load**

**Health is like  
a Bathtub**



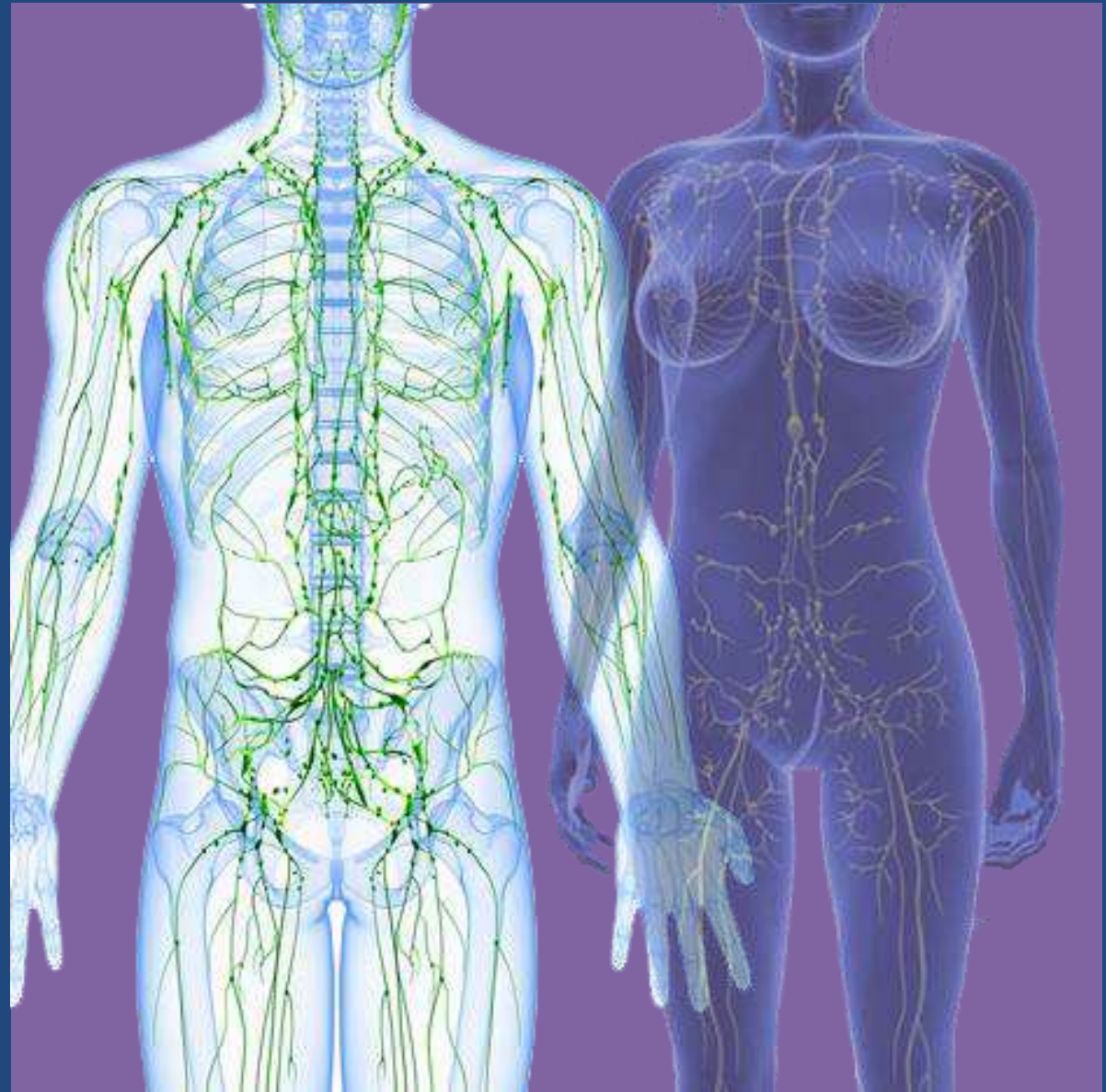
**“Clean-water” faucets =  
Healthy foods & nutrients,  
Purpose & will to live,  
Sunshine & exercise,  
Good relationships,  
Peace, joy & love,  
Great attitude,  
Restful sleep,  
Pure water,  
Fresh air**

**“Drains” =  
Bowel  
Liver  
Kidneys  
Lymphatics**

# How To Open The Detox Drains

- Plenty of water orally + Homeopathic drops
- Herbs, etc. to detox bowel, liver, GB, kidney, lymph, ground matrix (Nutramedix Burbur + Pinella)
- Far-infrared sauna or Biomat + blankets & then shower
- Clay baths or clay plasters, then shower
- Fasting, enzymes, fiber + enemas, colemics or colonics
- Visualization/shouting & liver/gall bladder flush with olive oil & lemon juice (soften GB stones first with OrthoPhosphoric Acid)
- Walnut oil, MCT &/or other healthy oil for swish-and-spit
- Rebound, dry skin brush, chi-machine for lymph
- Photo-magnetic lymphatic drainage (LBG, XP2, LymphStar)
- Photonic detox (Laser Energetic Detox or LED) taught as a course on [www.acimconnect.com](http://www.acimconnect.com) using ElectroDermal Screening or muscle-testing

Shallow  
& Deep Lymph  
Vessels  
Cleared By  
Photo-  
Magnetic  
Lymph Device  
& MLD or Chi-  
Machine





# “Chi-Machine”

Passive Mechanical  
Lymph Drainage

Healthy Swing Lymph is \$99 on Amazon





# Co-morbid Conditions in Borreliosis

These can predispose to, or perpetuate Lyme or **Multi-Symptom, Multi-Microbial Inflammation (MSMMI)**

- 1) Electromagnetic pollution
- 2) Heavy metal & other toxins
- 3) Fungi (candida,etc) &/or mycotoxins (esp.sinuses)
- 4) Gastrointestinal dysfunction
- 5) Parasites, “non-Lyme” bacteria & viruses
- 6) Focal infections (esp.in mouth &/or tonsils)
- 7) Kryptopyroluria & genetic detox defects
- 8) Nutrient deficiencies
- 9) “Toxic” and/or allergenic foods
- 10) Emotional traumas (esp.subconscious)
- 11) Adrenal and/or thyroid insufficiency
- 12) Structural misalignments/malocclusion
- 13) Hypoxia (sleep apnea, fibrin, ASCVD)
- 14) Neuro & CCSVI

**2 webinars “Lyme Look-Alikes” recorded on [www.acimconnect.com](http://www.acimconnect.com)**

# #3 Look-Alike = Fungi/Mycotoxins

- Fungi cause problems whether in body, workplace or home because of producing mycotoxins
- Mycotoxins are immune-suppressive & cause cancer
- If EVER in a moldy building, those fungi are likely still in the sinuses & drain into gut & trachea (esp.@night)
- Must first verify home & work are fungus-free & if not, correct the water leaks & excess EMF, then remediate
- After fungi clear in home & work & other places where time is often spent, then irrigate sinuses with warm saline + whole-leaf aloe vera +/- Lugol's iodine
- Eat NO sugar or starch X8 weeks & take antifungal herb

# Detox Made Simple

## *Create A Toxin-Free Body & Home...Starting Today*

by William Lee Cowden, MD & Connie Strasheim

- Written for the lay public while highly beneficial for practitioners
- Toxicity & detoxification is key to all chronic diseases
- More info: [www.acimconnect.com](http://www.acimconnect.com)

# Academy of Comprehensive Integrative Medicine Scientific Advisory Board



Connealy  
California



Gordon  
Arizona



Cowden  
Panama



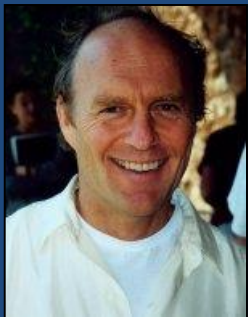
Contreras  
Mexico



Brose  
Portugal



Stark  
Boston



Klinghardt  
Germany



Renaud  
Canada



Mercola  
Illinois



Perez-Leon  
Spain



Pop  
Austria



Thomson  
Canada

**Please talk to me or go to the website to learn more & join: [www.acimconnect.com](http://www.acimconnect.com)**



# Academy of Comprehensive Integrative Medicine

## The Academy Offers:

- ◆ On-line Health/Wellness Education
- ◆ Integrative Medicine Fellowship
- ◆ Community & Mentoring
- ◆ Conferences & Webinars
- ◆ Inner-Circle Think-Tanks
- ◆ Forums & Blogs
- ◆ Clinical Research
- ◆ Client Referrals
- ◆ Peer-reviewed Journal

Most importantly, it offers the hope of real change, so that we can make a difference in how health care is delivered worldwide.

**Please join us. We need YOU !**

**[www.acimconnect.com](http://www.acimconnect.com)**

# Thank You! Now Questions?



[www.acimconnect.com](http://www.acimconnect.com)

Copyright W.L.Cowden 2017